

LION BROTHERS

FW

23

TREND RELEASE



FW/23 TRENDS



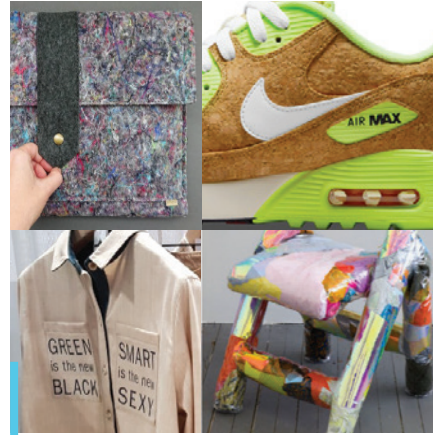
MODERN MAKER

An abstraction of traditional handcrafted techniques, designs are updated with saturated colors and modern accents.



TECHNICOLOR TUFTS

Surrealist patterns and energetic color combos, creating playful, lofted designs.



HOME GROWN

Upcycled looks blended with recycled materials form a deliberately eco-conscious aesthetic.



CLEAR CHOICE

Layered transparencies with overlapping colors create airy, ambiguous designs.



HYPERCOLOR

Mixing UV reactive inks and materials in vibrant, retro-styled designs.

MODERN MAKER



Coarse and abstracted embroidery patterns create hand-crafted designs.



Textural shading that mimics soft, hand-sketched layers of embroidery.



Designs inspired by the feel of vintage hand crafted crochet techniques.



Using the traditional artistry of beading with updated design sensibility

CDG

EMBROIDERY & 3D EMBROIDERY

This pair of embroidered emblems shows how unique looks can be achieved through materials and stitching choices. The first is fully embroidered with 3D stitching accenting the eyes, while the second uses more open stitching on a velvet ground.

DESIGN GUIDELINES

2221N1276024 & 2201N1276025

- Color matching on Infusion printed velvet can be subjective due to the surface texture and thickness.
- 3D embroidery requires a minimum column width of 3mm.
- Please see the Lion Stitch Library for a variety of motif stitch options that are available.
- Nine thread color maximum.
- Velvet requires a minimum column width of 2.5mm.

2221N1276024



PMS MATCHABLE
MATERIAL



WASH TESTED



FROM RECYCLED
MATERIAL

2221N1276025



INFUSION



PMS MATCHABLE
MATERIAL



WASH TESTED



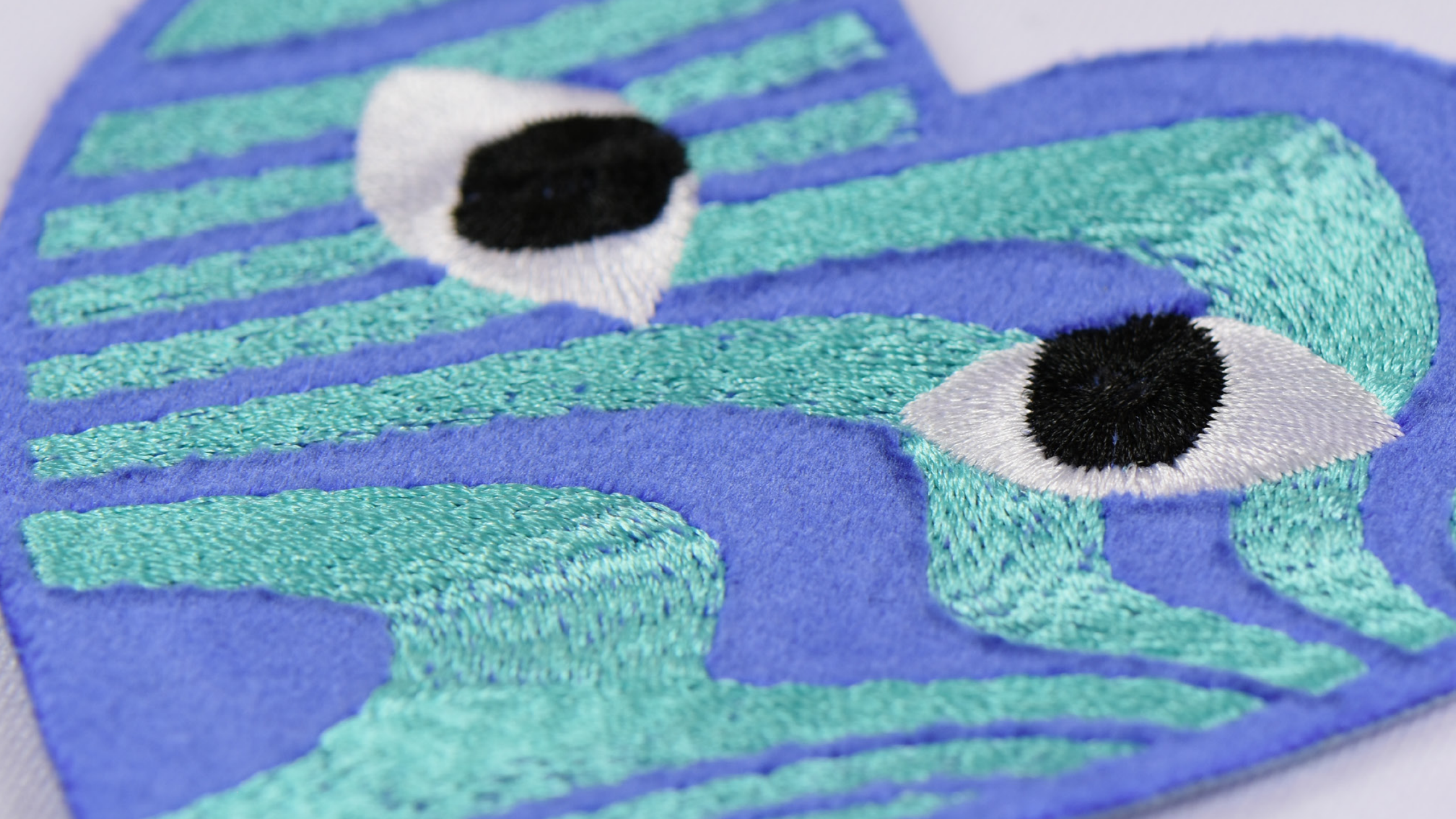
COMPLETELY
RECYCLABLE













TROIS-RIVIÈRES LIONS EMBROIDERED APPLIQUÉ

Featuring a two layered design with a printed poly twill ground and furry poly appliqué. Uneven craft embroidery seen in the zig zag stitching and grey fill areas are great choices for a more handmade look.

DESIGN GUIDELINES

2202N1267003

- Please see the Lion Stitch Library for a variety of motif stitch options that are available.
- Nine thread color maximum.



PMS MATCHABLE
MATERIAL



WASH TESTED



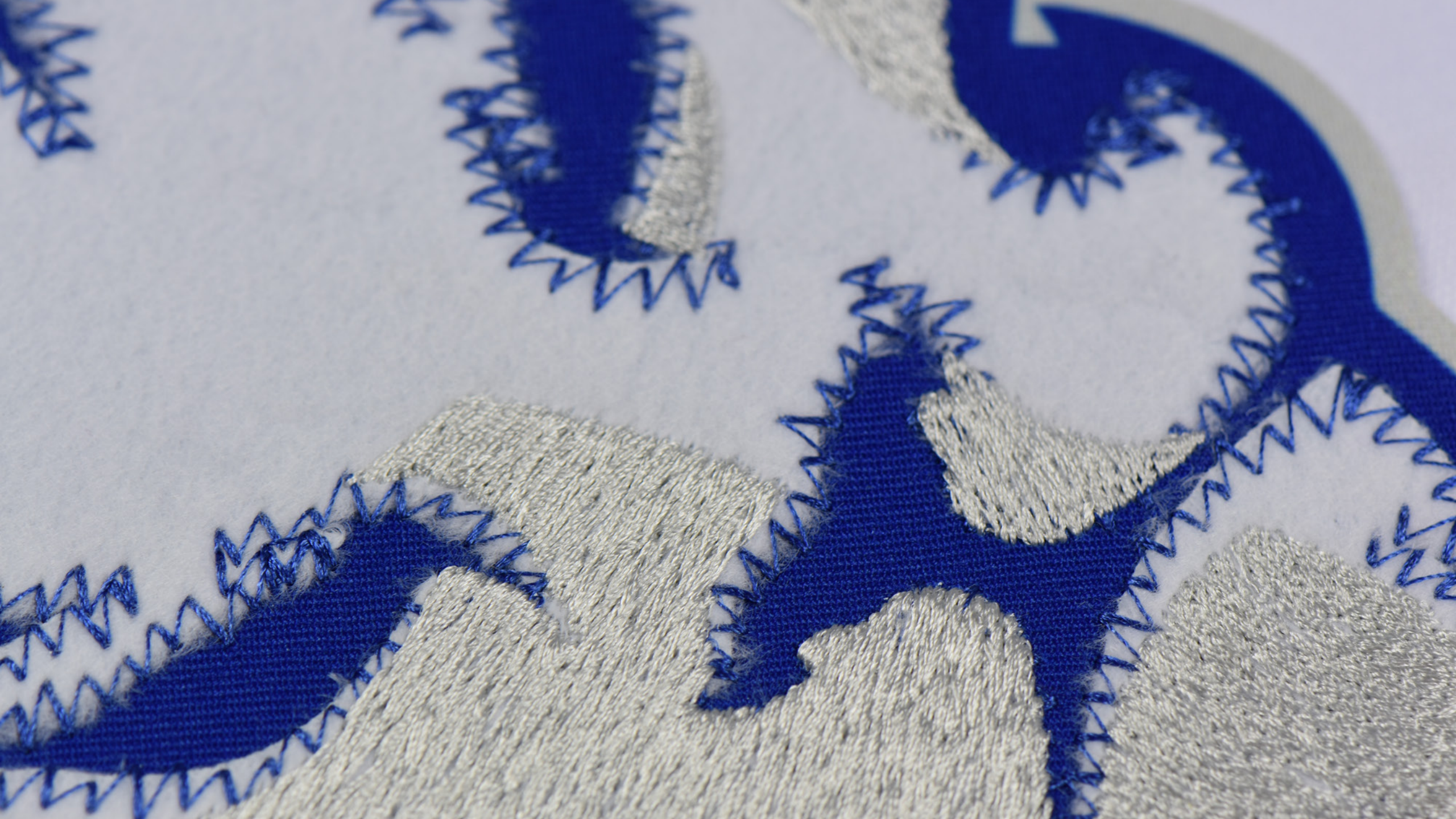
FROM RECYCLED
MATERIAL



COMPLETELY
RECYCLABLE









CALIFORNIA

3D EMBROIDERY

3D embroidery with a herringbone motif stitch adds dimensionality to this design, framing the illustrative embroidery within. Matte threads bring a traditional and craft feel to the design.

DESIGN GUIDELINES

2122N1267006

- 3D Embroidery requires a minimum column width of 3mm.
- Please see the Lion Stitch Library for a variety of motif stitch options that are available.
- Nine thread color maximum.



PMS MATCHABLE
MATERIAL



WASH TESTED



FROM RECYCLED
MATERIAL











BOSTON UNIVERSITY METALLIC CHENILLE ON FELT

Metallic thread is now available for chenille designs and offers a fresh take on a classic technique. With a distinct shine and unique hand feel, metallic chenille is a standout premium look.

DESIGN GUIDELINES

7200N1267032

- Please refer to Lion's Chenille Design guide for additional information.
- Three color maximum with a chenille color blend.



WASH TESTED



FROM RECYCLED
MATERIAL

BOSTON
UNIVERSITY







WASHINGTON NATIONALS

SEQUINS & BEADS

Sequins and beads placed with modern manufacturing techniques can create designs that utilize negative space. Perfect as an accent or used for full coverage. Both beads and sequins come in a variety of colors and finishes.

DESIGN GUIDELINES

6000N1267015 & 6000N1267016

- Sequins are available in a limited color pallet. Color cards are available upon request.
- Sequins cannot require exact placement - designs should accommodate 1mm of movement.
- Beads are available in a limited color pallet.



WASH TESTED

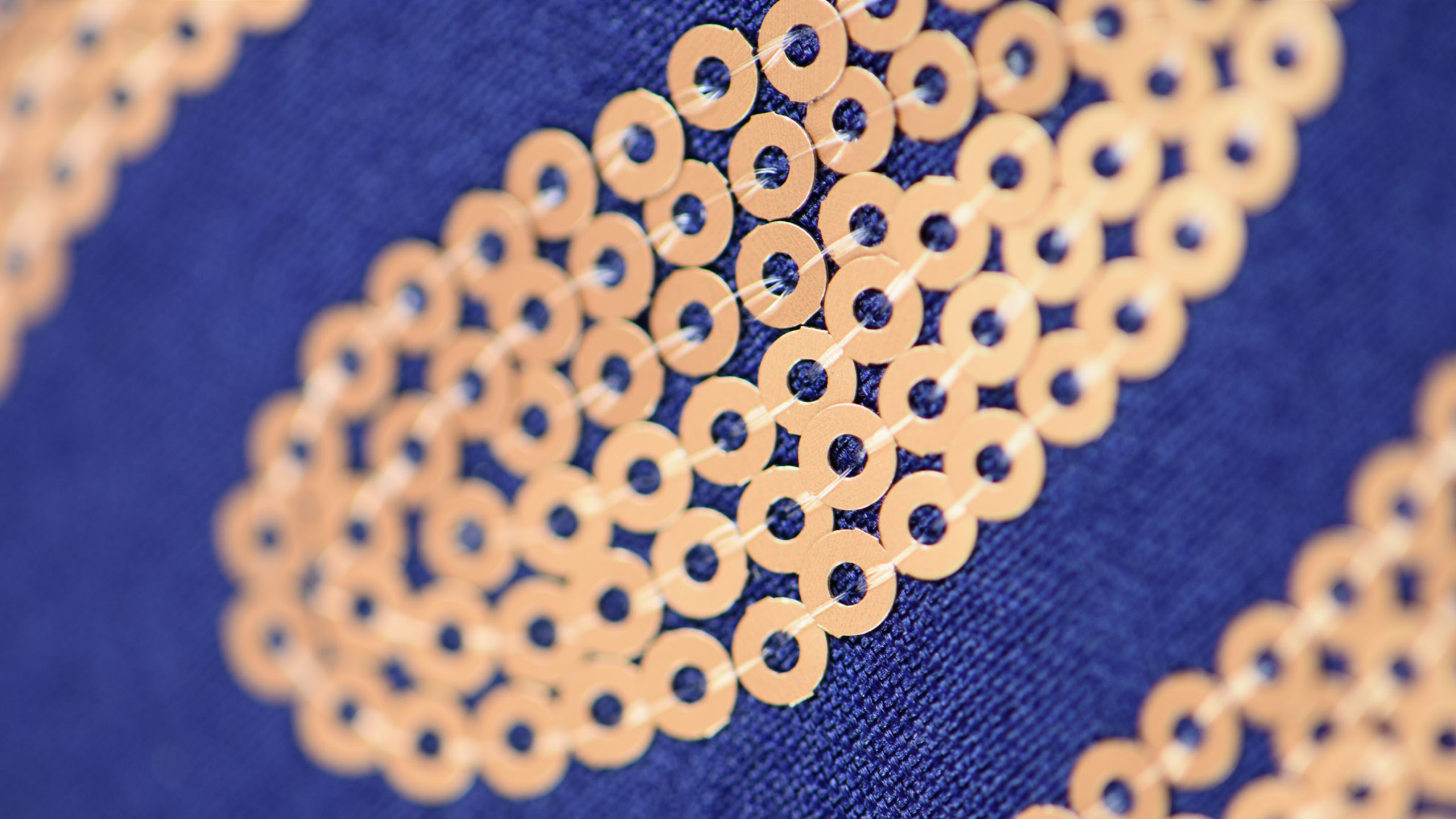


FROM RECYCLED
MATERIAL



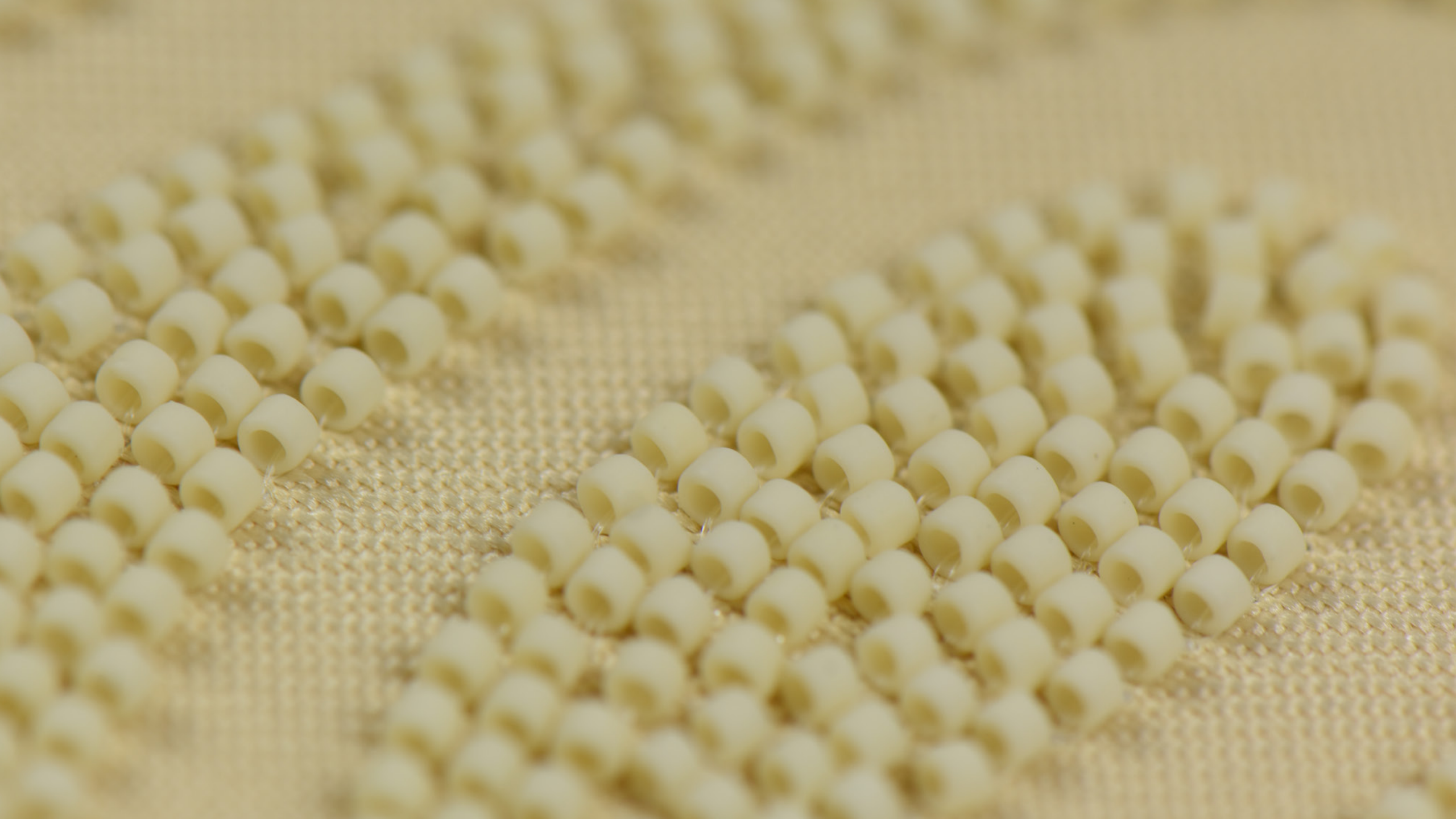












GANNI

EMBROIDERY WITH APPLIQUÉ

This knitting inspired design uses changes in thread density, length, and direction to create a one-of-a-kind aesthetic while still feeling very contemporary. The laser cut suede appliquéd directly on top of the stitching completes the look.

DESIGN GUIDELINES

2202N1267029

- Please see the Lion Stitch Library for a variety of motif stitch options that are available.
- Nine thread color maximum.



WASH TESTED



FROM RECYCLED
POLYESTER



COMPLETELY
RECYCLABLE

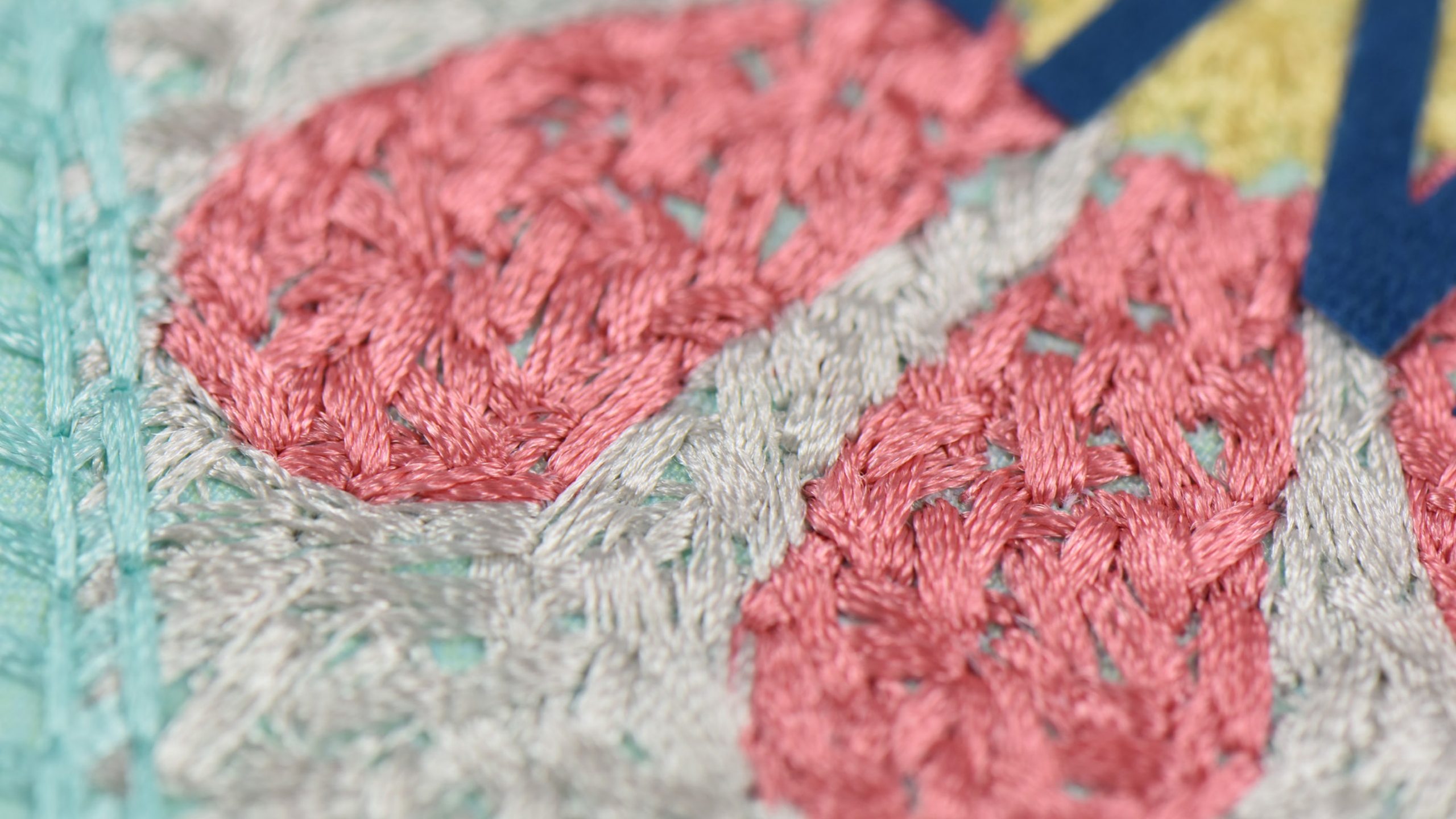


GANNI

GAYNVI







WISCONSIN BADGERS

SUBLIMATION, EMBROIDERY, & TOOTHBRUSH STITCHING

This collection ranges from classic printed mesh, to embroidered satin, all the way to toothbrush stitching. The assortment shows how different materials can be combined to create a range of price points and looks to fit any design need.

DESIGN GUIDELINES

4201N1267040, 1000N1267040, & 6101N1267040

- Please see the Lion Stitch Library for a variety of motif stitch options that are available.
- Nine thread color maximum.
- The toothbrush embroidery effect requires embroidered areas to be at least 3mm wide.



PMS MATCHABLE
MATERIAL



WASH TESTED



FROM RECYCLED
POLYESTER



COMPLETELY
RECYCLABLE













TECHNICOLOR TUFTS



Combining multi-color chenille embroidery threads with rich metallic shine.



Introducing Infusion printed chenille, using a tie dye pattern that is only possible with Lion Brothers innovative technology.



Bold colored chenille designs after a soft brushing, create a blended, surreal finished look.



Infusion printing on our furry poly material for a slightly more compact and directional appearance.

VANS

METALLIC CHENILLE

A range of specialty metallic threads are also available for chenille embroidery as seen here with our rainbow metallic thread. The wide range of colors contained within a single thread make each piece a true one of a kind.

DESIGN GUIDELINES

7200N1267008

- Please refer to Lion's Chenille Design guide for additional information.
- Three color maximum with a chenille color blend.



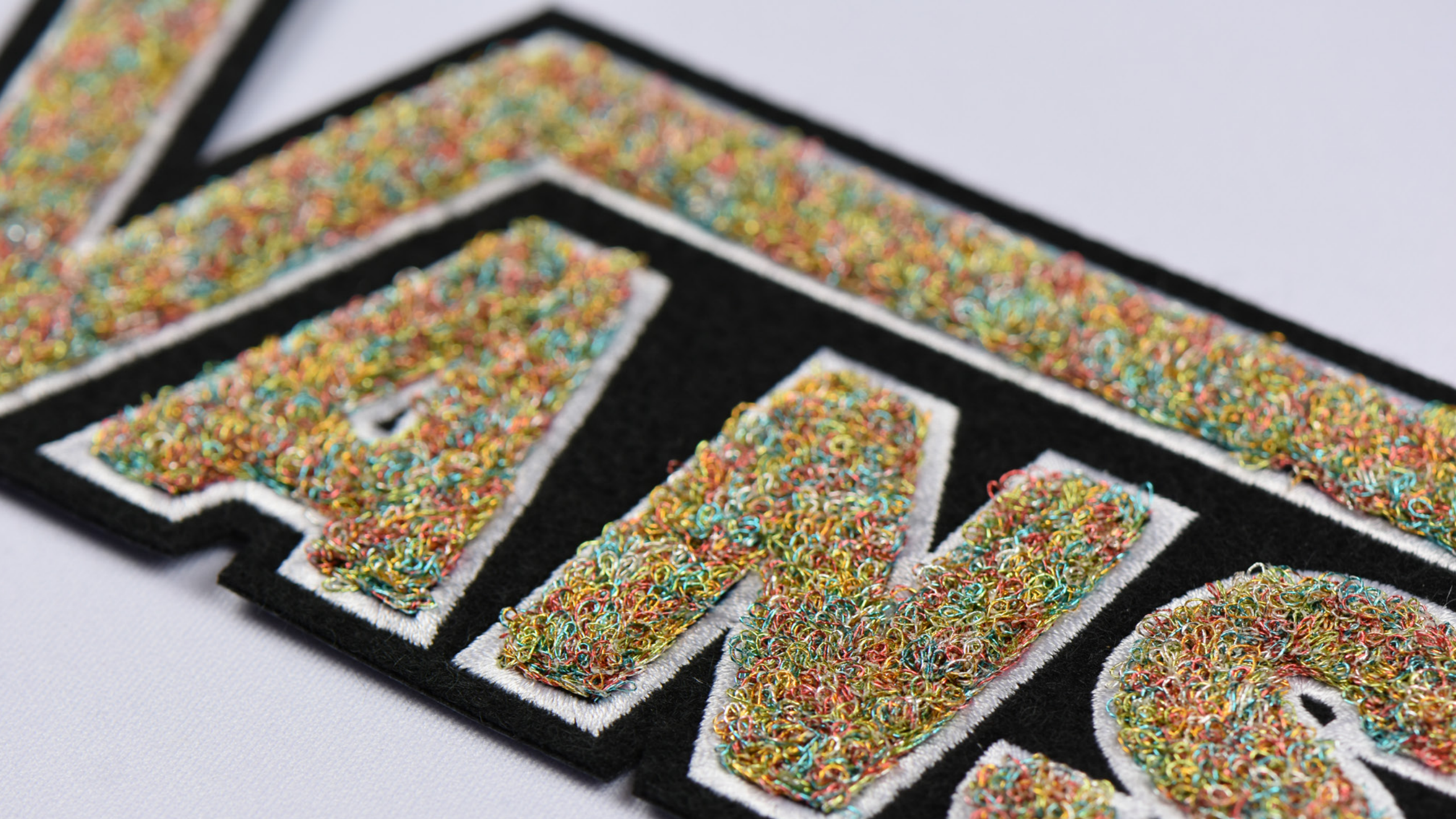
WASH TESTED



FROM RECYCLED MATERIAL

VANS

The image features the word "VANS" in a large, bold, sans-serif font. The letters are filled with a dense, multi-colored embroidery of small, looped threads in shades of red, green, blue, yellow, and orange. The letters are set against a solid black background, which is itself on a white surface. The overall appearance is that of a high-quality, textured embroidery patch.







MACINTOSH

BRUSHED CHENILLE

Brushed chenille on a satin ground layer creates a thick, furry texture for one of the most tactile hand feels that Lion offers. Overlapping segments of brushed fur colors create a semi-blended look.

DESIGN GUIDELINES

7200N1267042

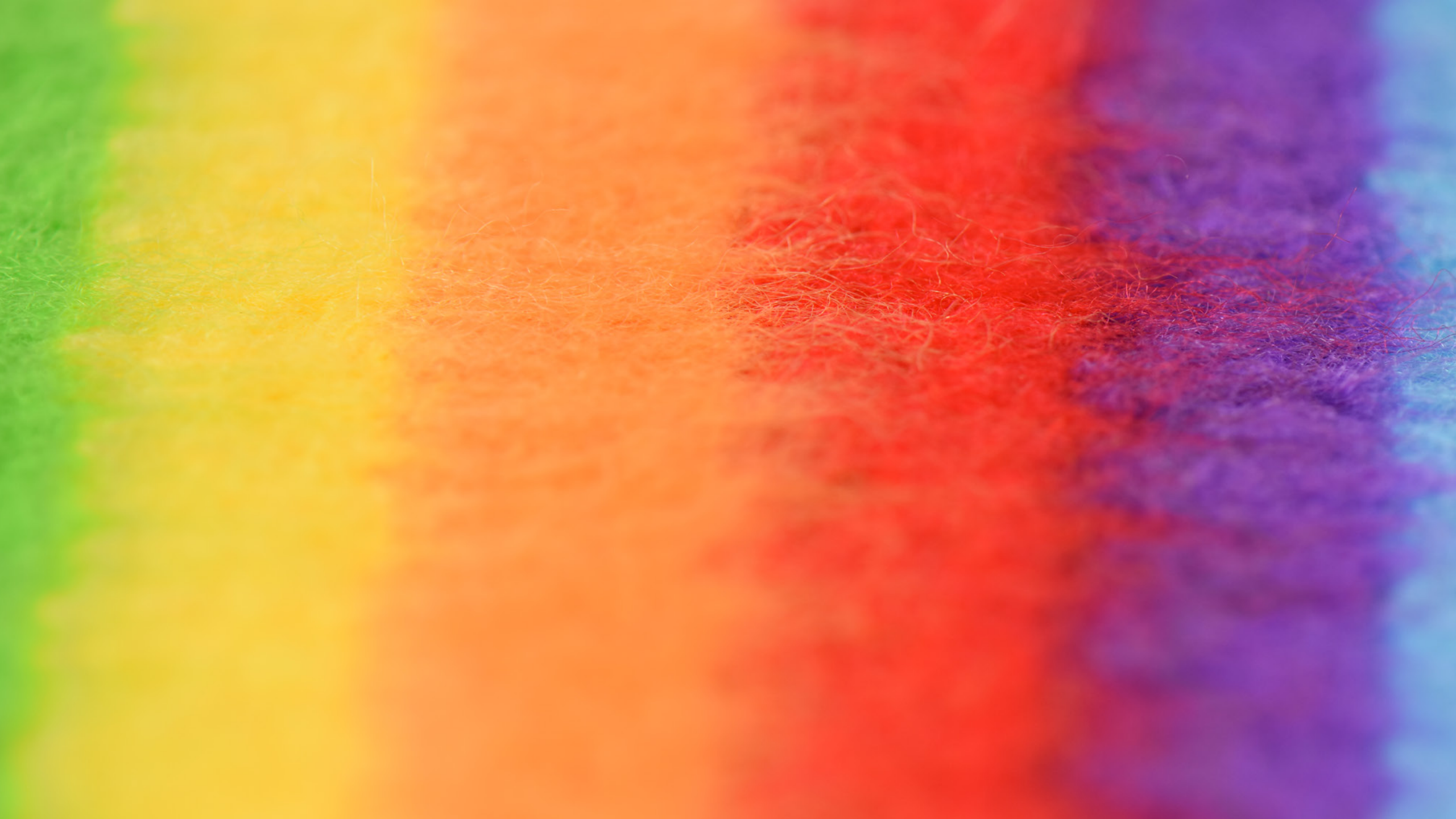
- Brushed chenille has a maximum six thread colors per design and cannot be mixed with other types of stitching.











IMPASTO BLOCK

CUSTOM EMBROIDERY ON TWILL

This embroidered alphabet set on twill uses layers of thick stitching in multiple vibrant colors to create depth and texture. The entire premade alphabet of this font is available and thread colors are customizable.

DESIGN GUIDELINES

2201N1276018

- Please see the Lion Stitch Library for a variety of motif stitch options that are available.
- Nine thread color maximum.
- The available size range is 85-115% of the sample size.
- Maximum single line letter limit is nine characters.



| | | | |
|--|--|--|---|
|  PMS MATCHABLE MATERIAL |  60°c x10 WASH TESTED |  100% FROM RECYCLED POLYESTER |  100 COMPLETELY RECYCLABLE |
|--|--|--|---|









DANCING BEARS

INFUSION CHENILLE

Chenille is now printable through Lion's Infusion process, opening the door to a variety of possibilities not achievable through standard chenille embroidery. Each emblem shows how different colored ground materials react to the Infusion process. White materials will show printed colors and transitional fades, while black materials will remain black even after printing.

DESIGN GUIDELINES

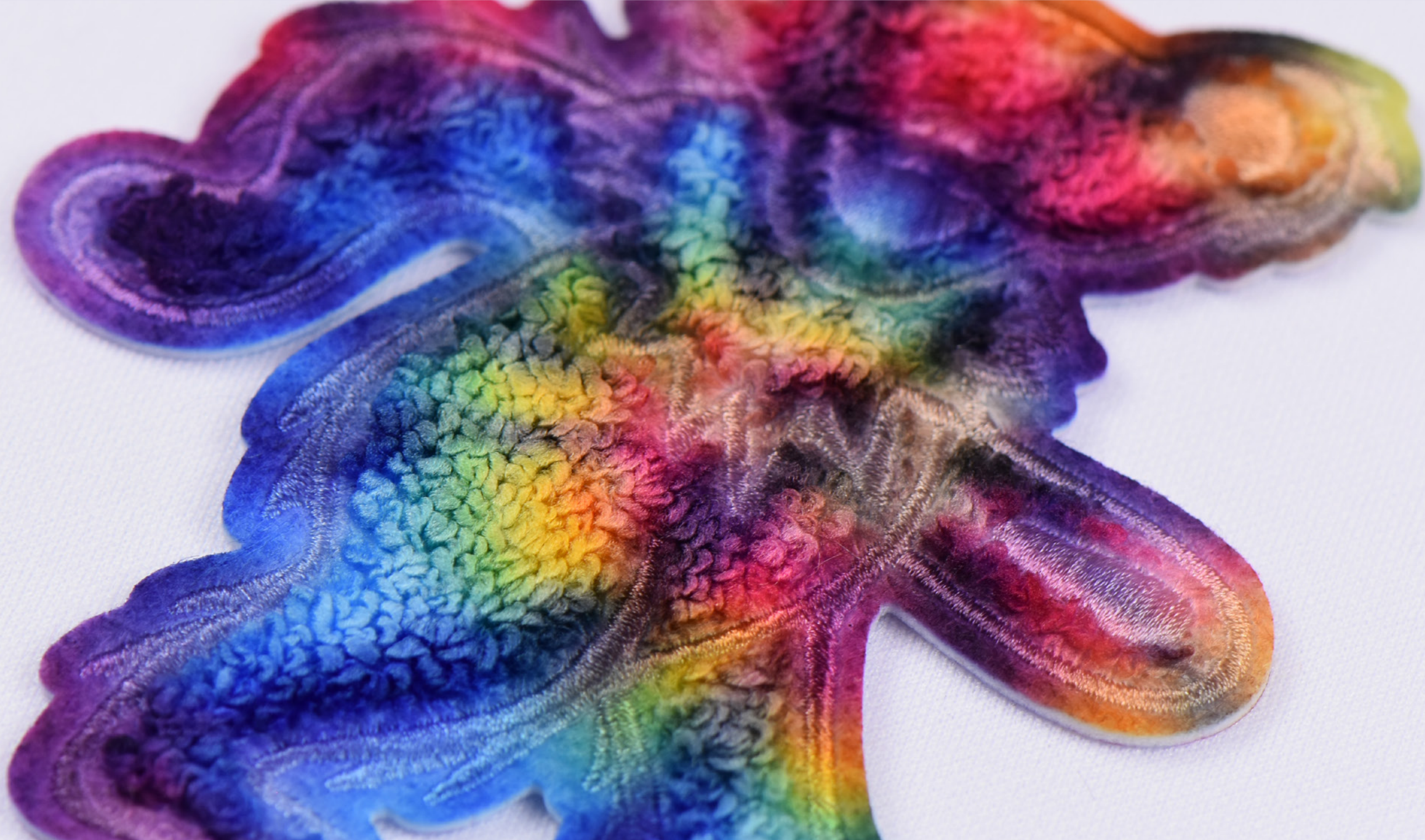
7200N1267026 & 7200N1267027

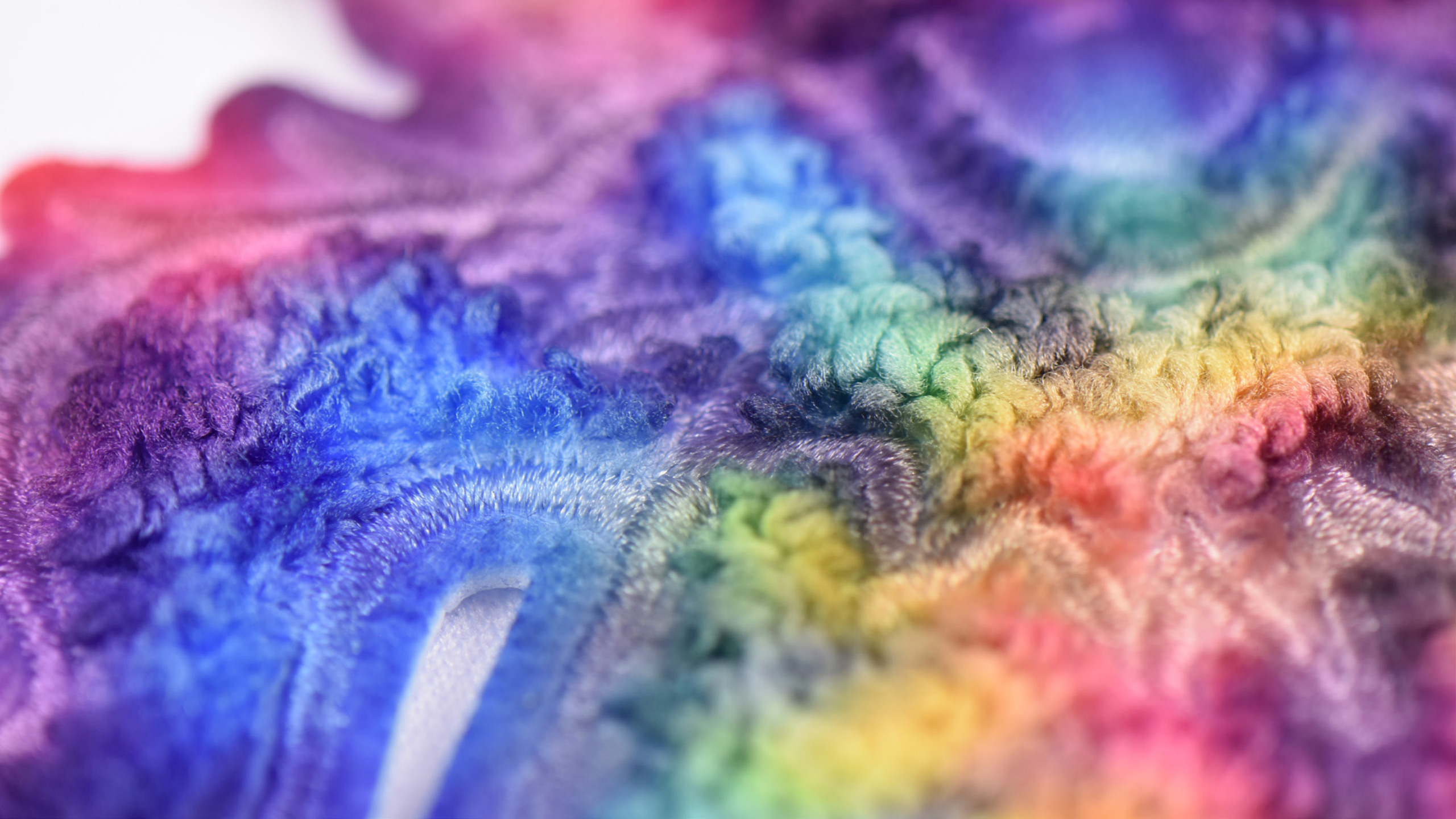
- Color matching on Infusion printed chenille can be subjective due to the surface texture and thickness.
- Infusion process over embroidered product requires non-registered print patterns or images.
- Ground material will also be printed. Due to chenille pile height, ground material color will be reduced and inconsistent, with notable lightening where the pile meets the ground material. Dark ground colors will hide this effect.
- Please refer to Lion's Chenille Design guide for additional information.
- Three color maximum with a chenille color blend.
- Chenille thread can be color matched.

| | | | | |
|--|--|--|--|---|
|  PMS MATCHABLE MATERIAL |  INFUSION |  60°C x10 WASH TESTED |  100% FROM RECYCLED POLYESTER |  100 COMPLETELY RECYCLABLE |
|--|--|--|--|---|















LONDON LAKERS

SUBLIMATION & EMBROIDERY ON FOAM

Printed and embroidered dazzle twill over multiple layers of puff material give this emblem a lofted and pillowed look.

DESIGN GUIDELINES

2305N1267044

- Recycled dazzle can be a single layer, though subtle fraying can occur. Capping alleviates this potential.
- Please see the Lion Stitch Library for a variety of motif stitch options that are available.
- Nine thread color maximum.



| | | | |
|--|--|--|--|
|  PMS MATCHABLE MATERIAL |  60°C x10 WASH TESTED |  100% FROM RECYCLED POLYESTER |  100% COMPLETELY RECYCLABLE |
|--|--|--|--|









MTV

INFUSED FURRY POLY ON TWILL

Introducing Infused furry poly! Appliquéd to a printed satin ground layer, it juxtaposes the texture of fur with the shine of satin. The infusion process used to print the fur material saturates fibers all the way through, which means there won't be any white fibers showing as the fur is moves.

DESIGN GUIDELINES

4202N1267007

- Color matching on Infusion printed furry poly can be subjective due to the surface texture and thickness.

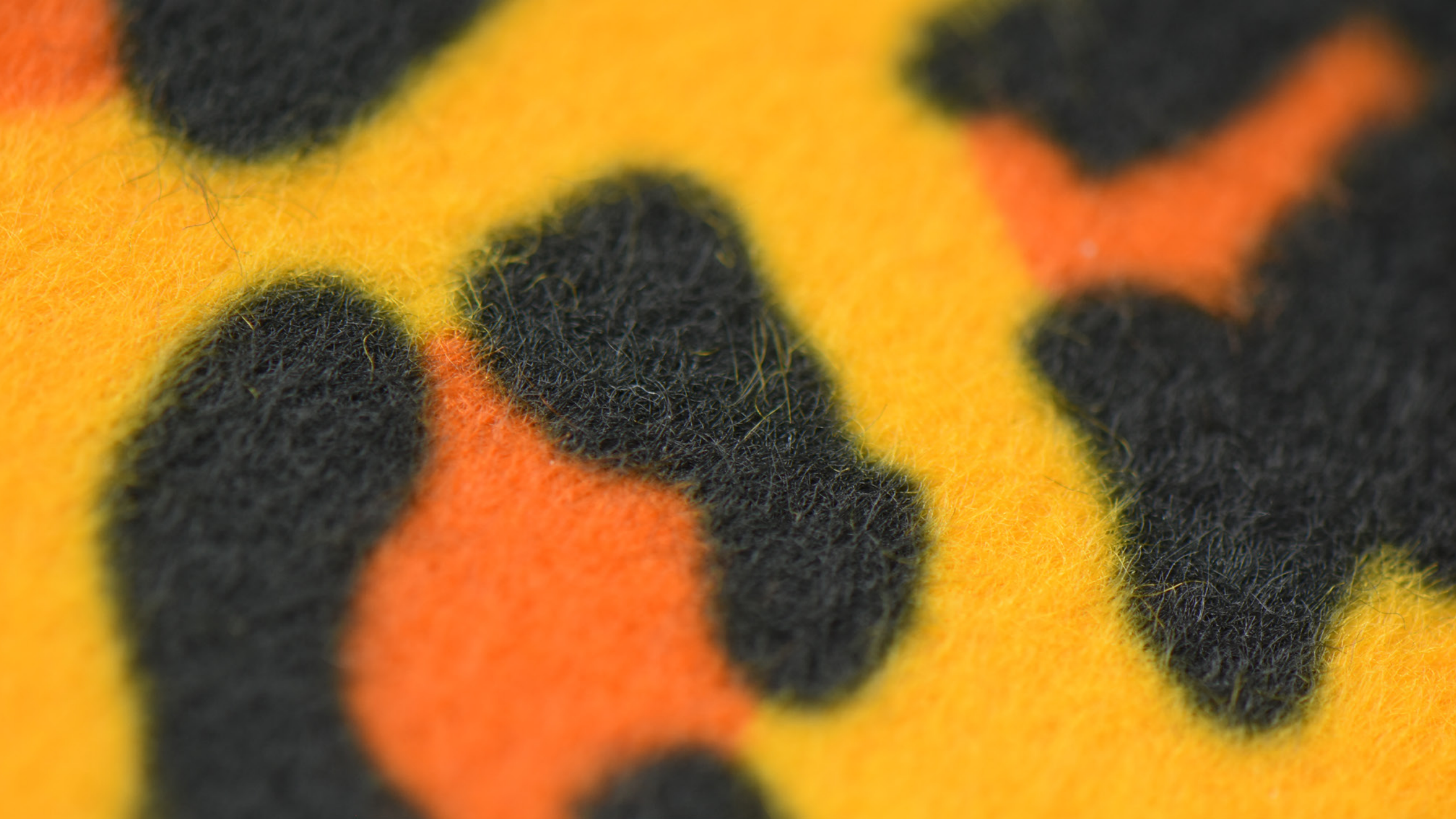


| | | | | |
|--|--|--|--|---|
|  PMS MATCHABLE MATERIAL |  INFUSION |  60°C x10 WASH TESTED |  >50% FROM RECYCLED MATERIAL |  100 COMPLETELY RECYCLABLE |
|--|--|--|--|---|









BAKER CHAMPION

REFLECTIVE APPLIQUÉ ON INFUSED FELT

This collection of three emblems features Infused felt ground material with a contrasting white reflective appliqué.

DESIGN GUIDELINES

4202N1267038

- Color matching on Infusion printed felt can be subjective due to the surface texture and thickness.
- Reflective material is available in a limited color pallet. Material color card available upon request.



| | | | |
|---|---|---|--|
|  REFLECTIVE |  INFUSION |  60°C x10 WASH TESTED |  >50% FROM RECYCLED MATERIAL |
|---|---|---|--|



BAKER



x

BAKER

Champion

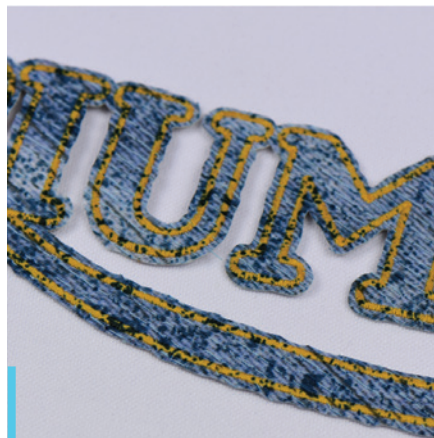
Champion



HOME GROWN



Introducing upcycled felt, which recycles different color scrap materials into one unique fabric.



Giving our recycled twill material an upcycled look with a distressed, all over print.



Recycled designs and materials printed with upcycled, scrappy graphics, and arrangements.

NOTRE DAME IRISH

FELT WITH EMBROIDERY

This upcycled comparison features simple custom edge stitching. The first is an Infused recycled felt that emulates the look of upcycled felt, allowing for color customization. The second is upcycled, composite felt derived from scrap and recycled materials.

DESIGN GUIDELINES

2201N1267034 & 1000N1267035

- Color matching on Infusion printed felt can be subjective due to the surface texture and thickness.
- Please see the Lion Stitch Library for a variety of motif stitch options that are available.
- Nine thread color maximum.

2201N1267034

| | | | | |
|---|---|--|--|--|
|  PMS MATCHABLE MATERIAL |  INFUSION |  60°C x10 WASH TESTED |  100% FROM RECYCLED POLYESTER |  100% COMPLETELY RECYCLABLE |
|---|---|--|--|--|

1000N1267035

| | | | |
|--|--|---|--|
|  60°C x10 WASH TESTED |  100% FROM RECYCLED POLYESTER |  POST INDUSTRIAL RECYCLED |  100% COMPLETELY RECYCLABLE |
|--|--|---|--|



Quik™







Irish  **TM**





TRIUMPH

SUBLIMATION, EMBROIDERY, & OVERPRINTING

Printed twill is embroidered with matte thread and then overprinted a second time to create a distressed and purposefully worn look. The matte thread absorbs the top print and adds to the overall vintage look.

DESIGN GUIDELINES

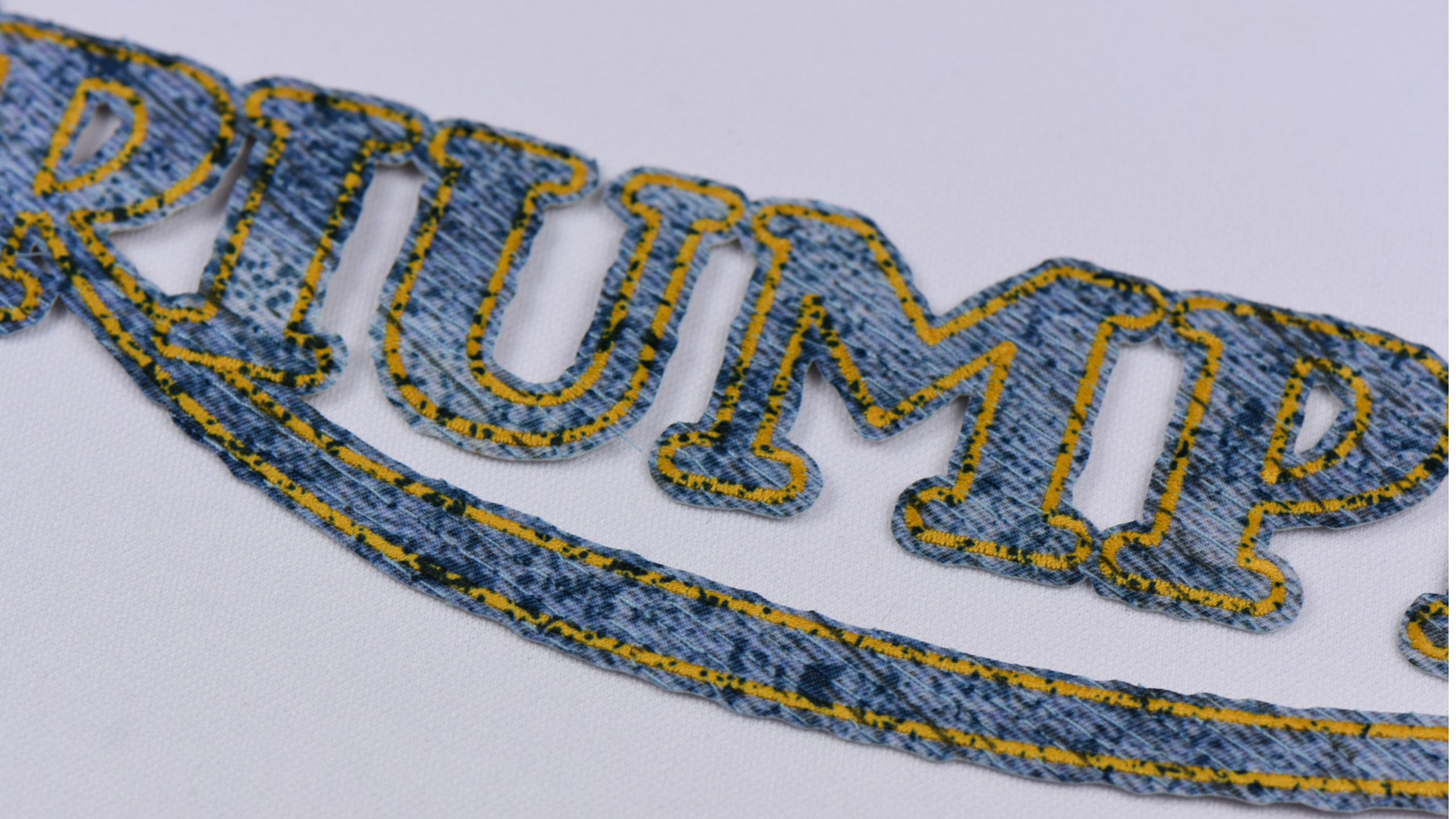
2601N1267005

- Material must be unbacked to fray.
- Overprint process requires non-registered print patterns or images.
- Ground material will also be printed. Dark ground colors will hide this effect.

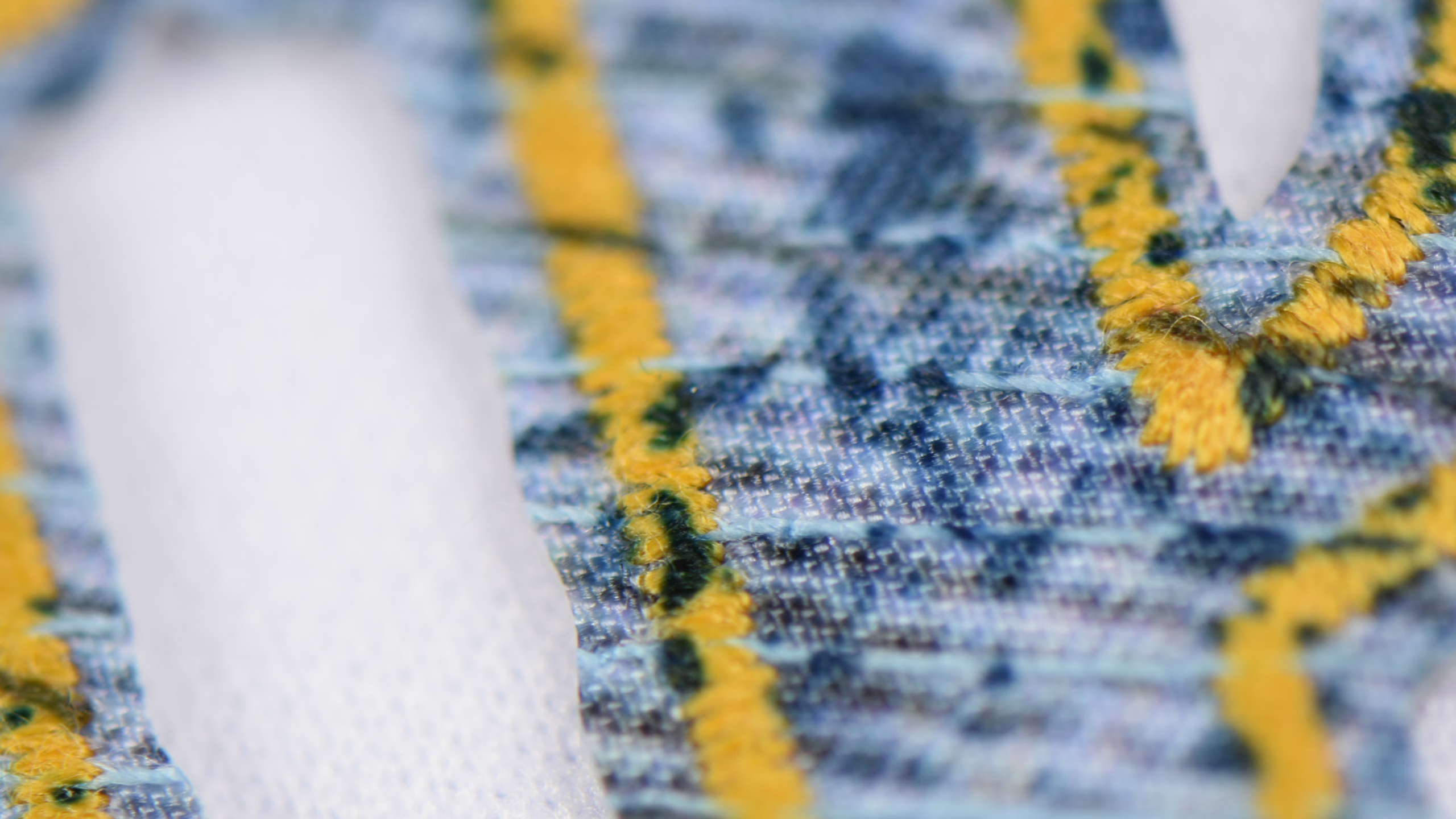


| | | | | |
|---|---|---|---|---|
|  PMS MATCHABLE MATERIAL |  INFUSION |  60°C x10 WASH TESTED |  >50% FROM RECYCLED MATERIAL |  100 COMPLETELY RECYCLABLE |
|---|---|---|---|---|

TRUMP







UNIVERSITY OF DELAWARE

CHENILLE CHAIN STITCHING & INFUSION

This combination piece features an Infused felt ground layer with chenille embroidery and decorative chainstitching in the large letters.

DESIGN GUIDELINES

7200N1267041

- Please refer to Lion's Chenille Design guide for additional information.
- Color matching on Infusion printed felt can be subjective due to the surface texture and thickness.
- Please see the Lion Stitch Library for a variety of motif stitch options that are available.
- Nine thread color maximum.



| | | | |
|---|---|--|--|
|  PMS MATCHABLE MATERIAL |  WASH TESTED 60°C x10 |  FROM RECYCLED POLYESTER 100% |  COMPLETELY RECYCLABLE 100% |
|---|---|--|--|

DELAWARE



Fightin' Blue HensTM
VINTAGE 1967







GUCCI

APPLIQUÉ ON VELVET & FOAM

This design features a layer of puff foam between a twill ground and Infused velvet appliqué. Atop all of this is a layer of satin stitched sherpa with a purposefully uneven edge.

DESIGN GUIDELINES

2322N1276019

- Color matching on Infusion printed velvet can be subjective due to the surface texture and thickness.
- Pillinging requires and minimum element dimension of 6mm and a satin appliqué stitch of 3mm.
- Please note that due to the material pile of velvet, larger, tonal embroidery provides the best outcome, while fine embroidery is not recommended.
- Velvet requires a minimum column width of 2.5mm.











CLEMSON TIGERS

EMBROIDERY ON LEATHER

Motif embroidery on a ground of faux leather creates a classic mesh pattern. The open nature of the stitched design keeps thread count low and allows for flexibility in a larger full chest emblem.

DESIGN GUIDELINES

1000N1267039

- Faux Leather is available in a limited color pallet. Material color card available upon request.
- Please see the Lion Stitch Library for a variety of motif stitch options that are available.
- Nine thread color maximum.



CLEMSON

TIGERS

WELLS
WELLS





NEW ORLEANS SAINTS

LEATHER CAP WITH CUSTOM CUTS

The base layer is composed of a printed felt with intricate laser cut patterns, followed by a tonal faux leather cap.

DESIGN GUIDELINES

4202N1276017

- Faux leather is available in a limited color pallet. Material color card available upon request.



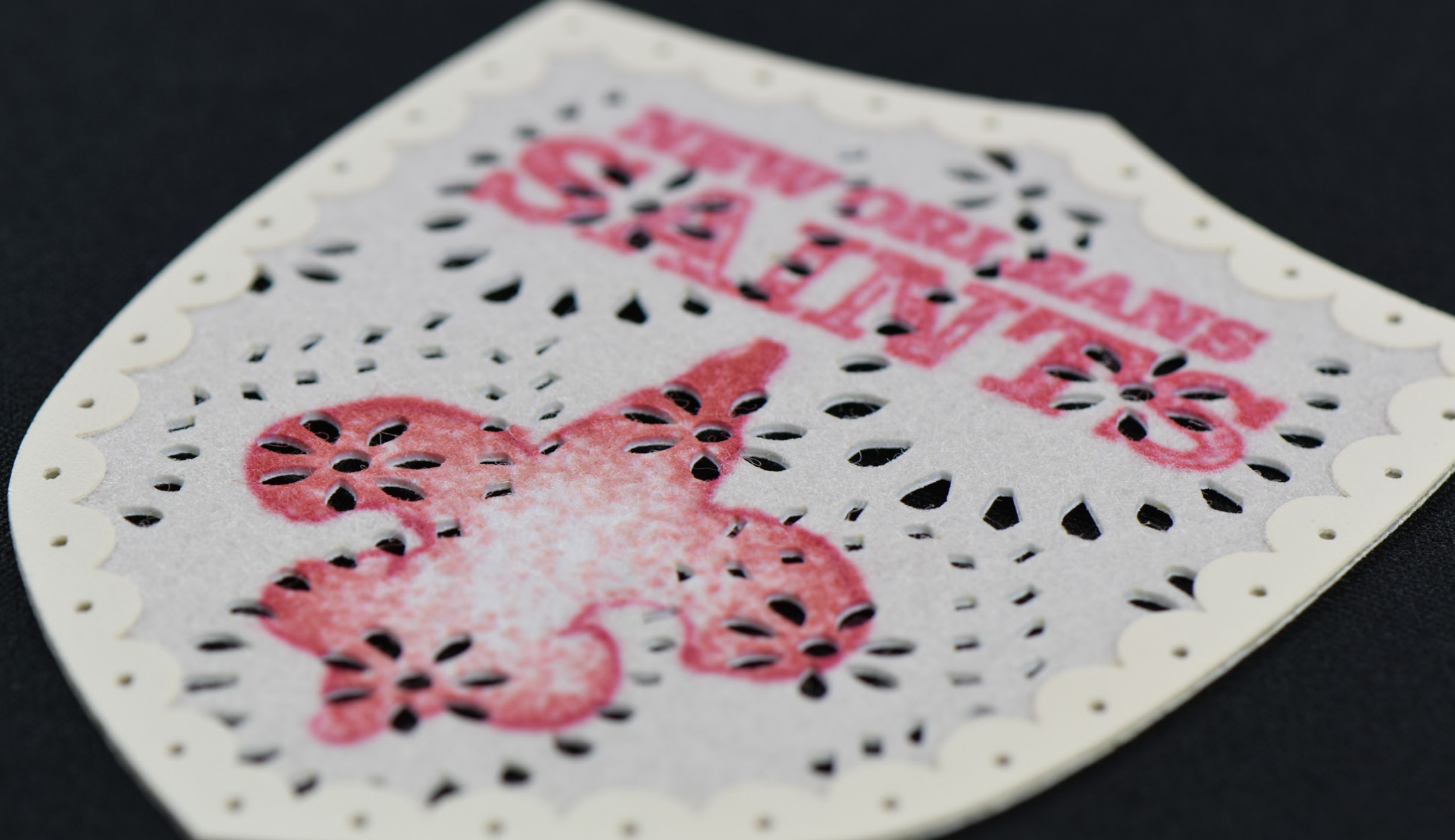
WASH TESTED



FROM RECYCLED MATERIAL



NEW ORLEANS
SAINTS



NEW ORIGINALS
SHEETS





LEVI'S

SUBLIMATION WITH CUSTOM CUTS

This emblem features a combination of three different printed materials, twill, satin, and suede. The central word mark has been cut out to allow the garment to show through and become part of the decoration.

DESIGN GUIDELINES

4203N1267031

- Standard tolerances apply.
- Please consult your merchandiser to discuss the design parameters of the design or designs that you are interested in.



| | | | |
|---|--|--|--|
|  PMS MATCHABLE MATERIAL |  WASH TESTED x10 |  FROM RECYCLED POLYESTER |  COMPLETELY RECYCLABLE |
|---|--|--|--|

LEVI STRAUSS
SAN FRANCISCO



STRAUSS &

SINCE 1853

Authentic Western
Riding Wear



PRICE LIST MAY 15, 1935

The Original Copper Riveted
Overall (Levi Strauss Patent)

DE RANCH DUE

LOR RODEO AND FIESTA

TIER MODEL RIDING PA

Featherweight SHE

...ates...



LEVI'S

LEVI STRAUSS
SAN FRANCISCO

STRAUSS &
SINCE 1853

Authentic Western
Riding Wear

styles...

L

E

V

E

S

PRICE LIST MAY 15, 1921

The Original Copper Rivet
Overall (Levi Strauss Pat.)

THE RANCH DUTY

FOR RODEO AND FIESTA
HEAVY MODEL RIDING PA

HEAVYWEIGHT SHE

LEVI'S

LEVI'S
WESTERN
WEAR

LEVI'S
& CO.

GET THE
NEW THE
REBELLION

THE

L

e

v

v

s

Authentic Western
Riding Wear

PRICE LIST MAY 15, 1951

The Original Copper River
Overall (Lined Stripes Pat.)





SEE LIST MAY 18 1971
IN OLYMPIA COUNTY
OFFICE OF THE
DEPARTMENT OF
ST. LOUIS MO
1971

CALGARY FLAMES

HD SILICONE

HD silicone is a great choice to create crisp, detailed designs with varying heights as seen here in this emblem that mimics the shape of tire treads.

DESIGN GUIDELINES

6500N1267001

- Please refer to Lion's Silicone Design Guide for additional information on our molded Silicone options.
- For design containing varying heights of HD silicone, a ground material must be used to ensure proper adhesion to carrier paper and to the garment.
- Clear silicone overlays require a 1mm inset from the edge of the area it is applied to.
- Can color match.
- Various finishes are available.
- Can differentiate heights up to 1mm.











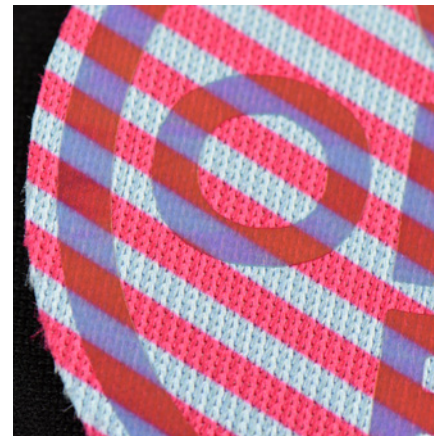
CLEAR CHOICE



Layers of off-set print semi-obscurd with molded transparencies.



Iridescent film accenting the border of a multicolor print with gradients.



Vibrant colors are accented with translucent iridescent films.



Layers of printed sheer material overlap to create dimension and depth.

NINTENDO

TPU OVER SUBLIMATION

This printed logo with an offset appearance is on a ground layer of stepcloth which has its built-in texture and sheen. Atop this is a clear, embossed TPU appliqué.

DESIGN GUIDELINES

6500N1267009

- Sublimation on step cloth is color matchable.
- Due to the textured surface, sublimation on stepcloth should avoid detailed images.
- Stepcloth must have a capped edge.







Mintendo



Winter



CHAMPION

SUBLIMATION WITH IRIDESCENT FILM

This emblem combines a rainbow printed dazzle ground layer with an iridescent foil. Due to the semitransparent nature of the foil, the colors beneath show through and take on a new and vibrant hue.

DESIGN GUIDELINES

4202N1267037

- Foil is available in a limited color pallet. Material color cards are available upon request.
- Foil must be top layer.
- Please note, foil cap will acquire a similar surface texture to the material it is applied to.



WASH TESTED



FROM RECYCLED MATERIAL



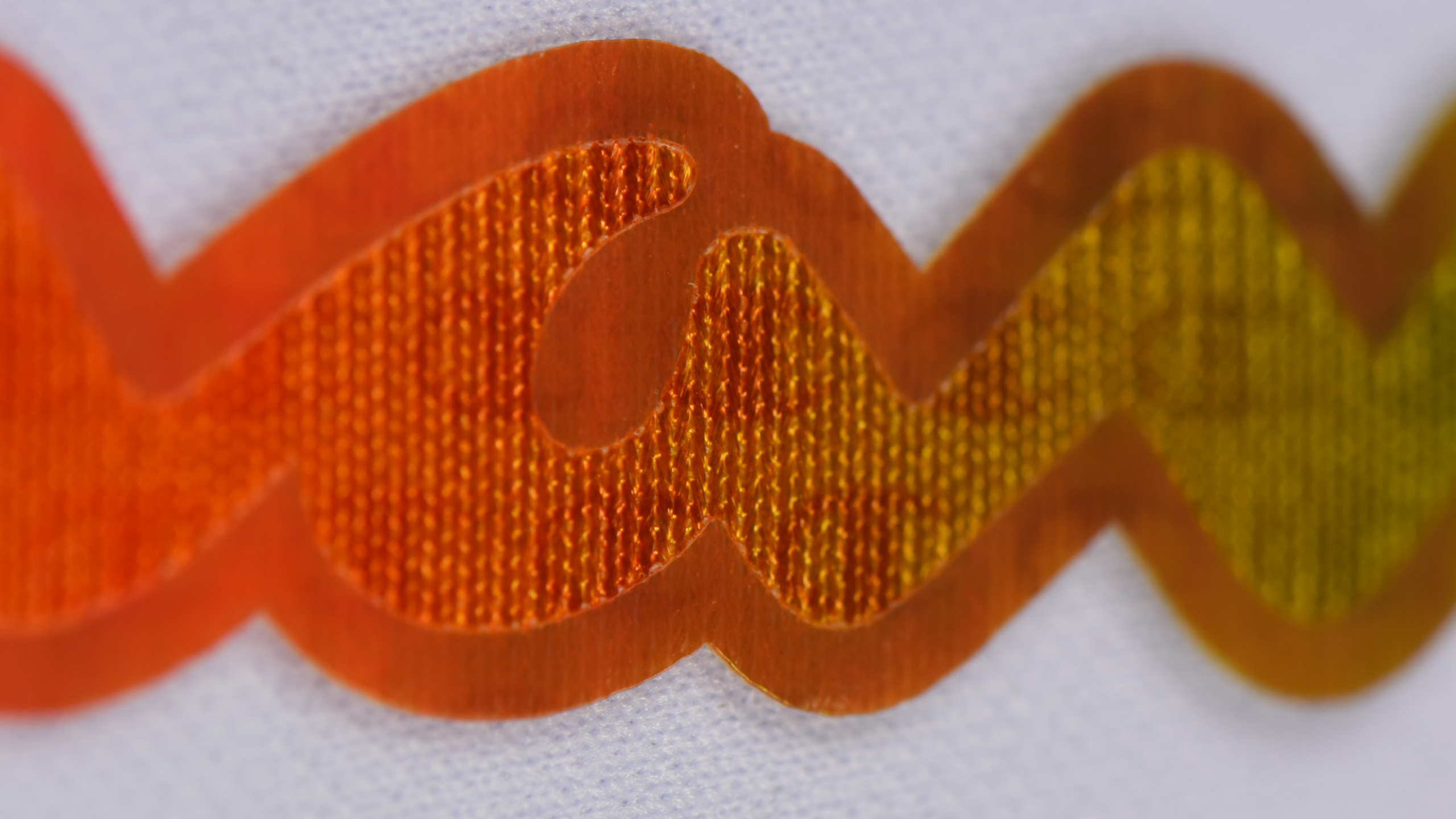
LOW WATER USAGE



Champion







OFF WHITE

SUBLIMATION WITH IRIDESCENT FILM

This is another iteration of printed dazzle with an iridescent foil overlay. However, this time the bottom print color is segmented to show how each color section changes after being covered by the foil.

DESIGN GUIDELINES

4202N1267049

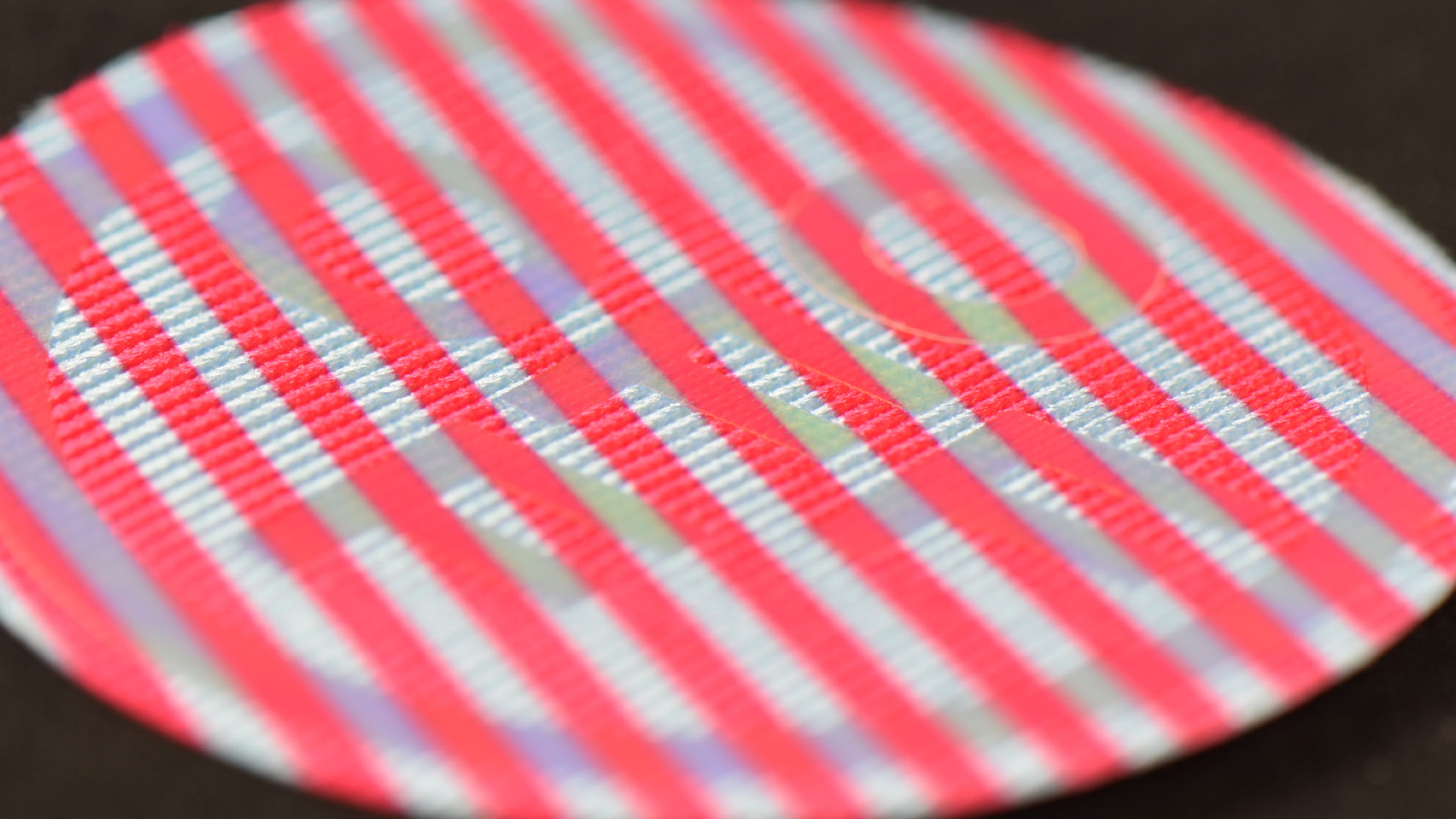
- Foil is available in a limited color pallet.
- Foil must be top layer.
- Please note, foil appliqué will acquire a similar surface texture to the material it is applied to.
- Recycled dazzle can be a single layer, though subtle fraying can occur. Capping alleviates this potential.

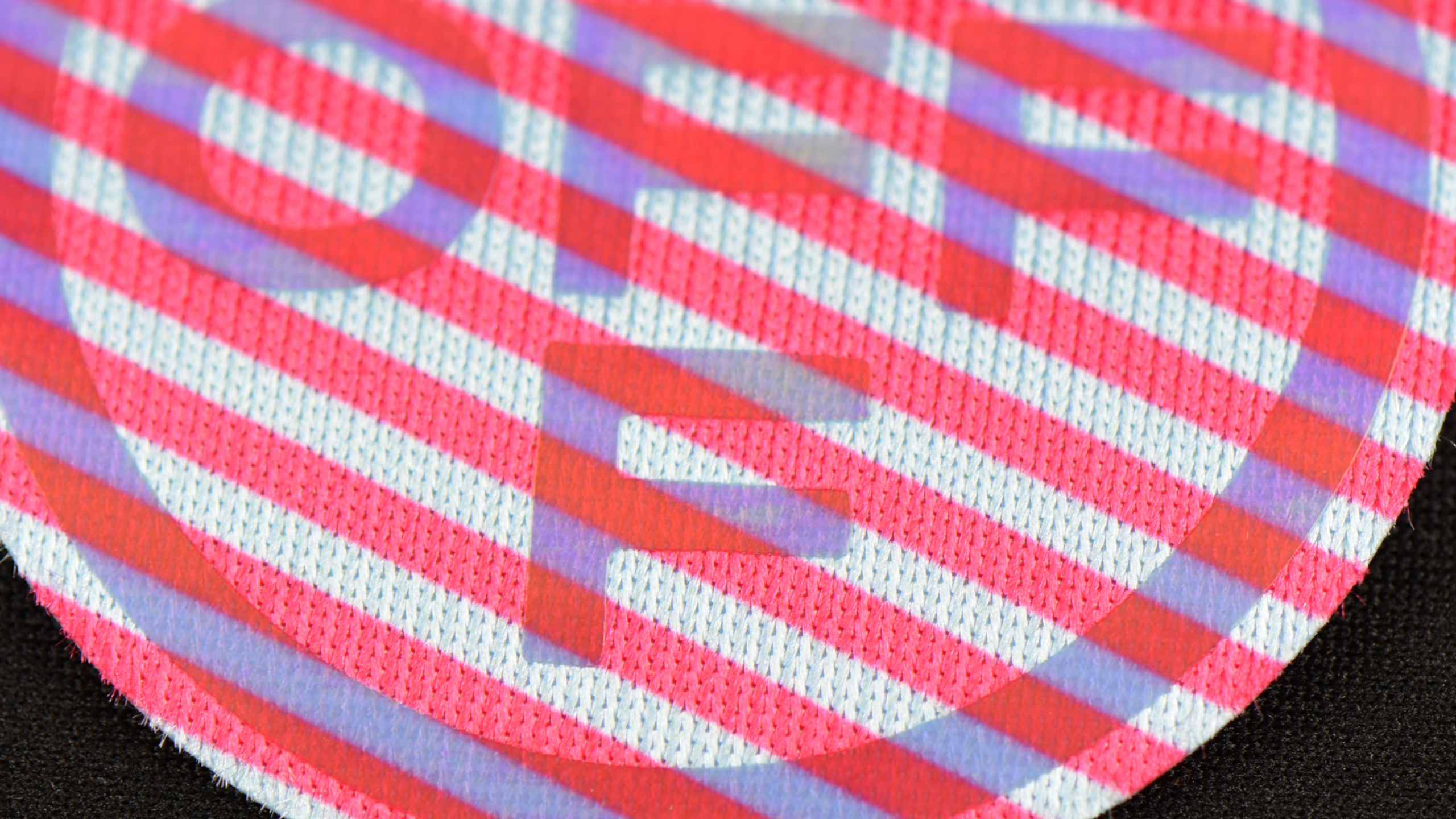


WASH TESTED

FROM RECYCLED
MATERIALLOW WATER
USAGE









LEGO

SHEER APPLIQUÉ ON SUBLIMATION

The first layer is printed poly pro twill and the second is an appliquéd print of semitransparent sheer material. The part of the second layer in the Lego wordmark that isn't printed serves as a window that you can see the first layer through.

DESIGN GUIDELINES

2302N1267046

- Please see the Lion Stitch Library for a variety of motif stitch options that are available.
- Nine thread color maximum.











HELLO KITTY

SUBLIMATION WITH CLEAR SILICONE

Clear glossy silicone overlays a ground layer of floral printed poly pro twill. The clear silicone has a distinct smooth and tacky texture with rounded soft edges.

DESIGN GUIDELINES

6500N1267010

- Please refer to Lion's Silicone Design Guide for additional information on our molded silicone options.
- For design containing varying heights of HD silicone, a ground material must be used to ensure proper adhesion to carrier paper and to the garment.
- Clear silicone overlays require a 1mm inset from the edge of the area it is applied to.
- Materials that clear silicone can be applied to are limited—please consult your merchandiser.
- Clear silicone cannot be the ground layer of a multi-layered design.
- Can differentiate heights up to 1mm.



PMS MATCHABLE MATERIAL

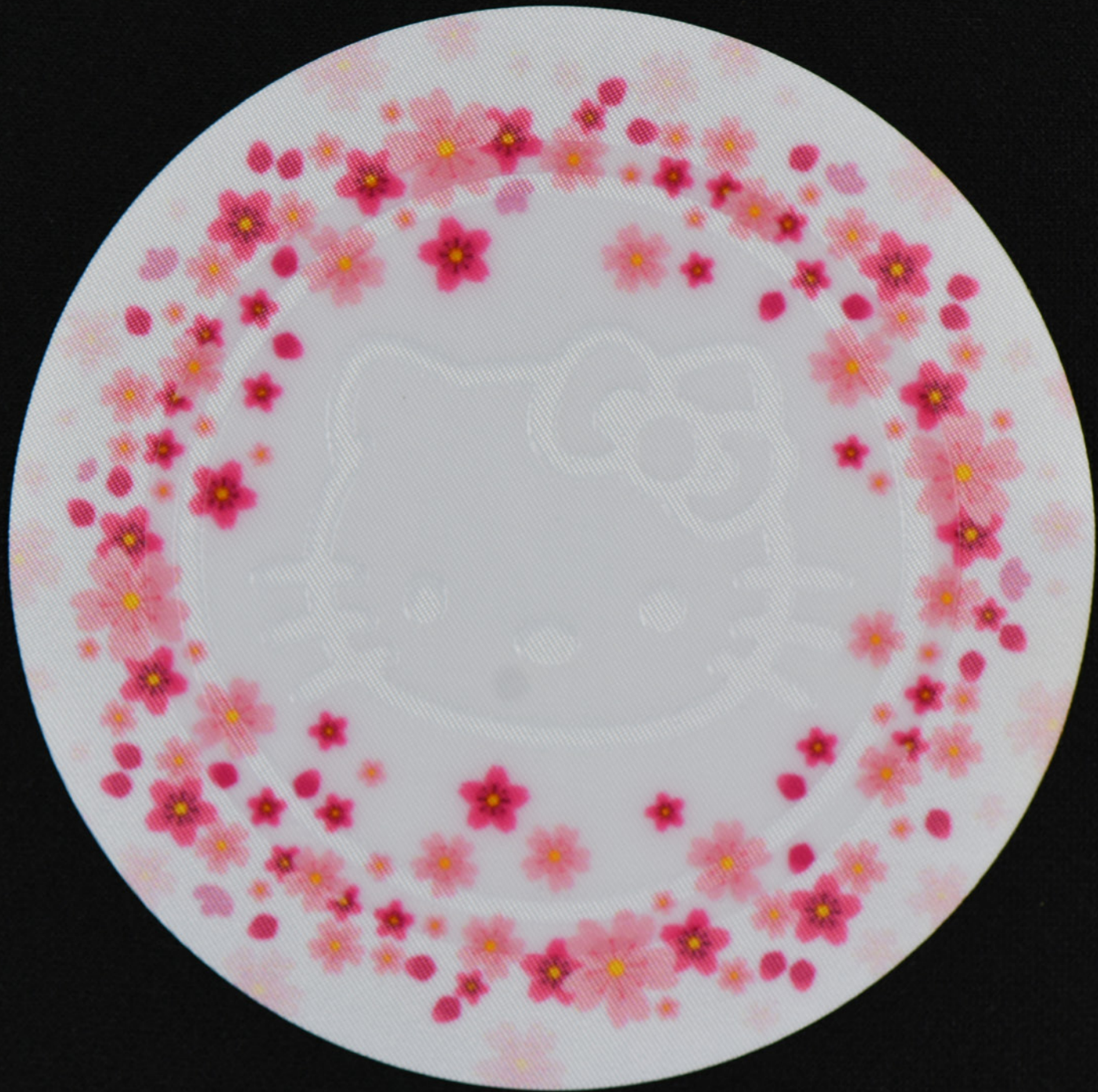


WASH TESTED



FROM RECYCLED MATERIAL











HYPER COLOR



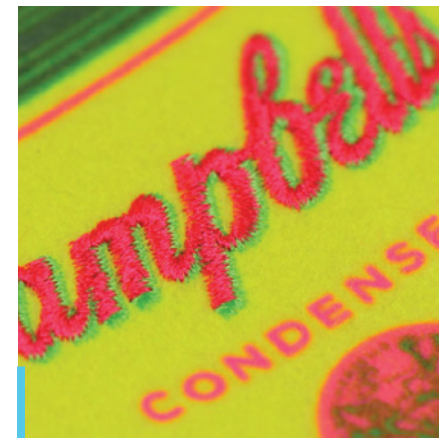
Introducing our new UV reactive silicone inks, hidden colors reveal themselves in the sun.



Sunlight brings to life hidden UV reactive patterns in tonal graphic designs.



Using our neon color palette with Infusion velvet creates UV light reactive colors.



Combining neon inks and thread colors for a UV reactive effect, reimagines traditional designs.

CHINATOWN MARKET

PHOTOCHROMATIC SILICONE

Introducing Lion's sunlight reactive silicone! When not exposed to UV light, the silicone appears white, and the design has a tonal affect. When exposed to sunlight, the white quickly changes to reveal bright, vibrant colors.

DESIGN GUIDELINES

6500N1267030

- Please refer to Lion's Silicone Design Guide for additional information on our molded silicone options.
- For design containing varying heights of HD silicone, a ground material must be used to ensure proper adhesion to carrier paper and to the garment.
- Photochromatic ink colors available in limited pallet. Can request color card.
- Please consult merchandiser on this new and exciting product.



UV RESPONSIVE



WASH TESTED



CHINATOWN



MARKET







BURGER KING

PHOTOCHROMATIC SILICONE

Another example of sunlight reactive silicone shown here as a standalone piece. Even without exposure to UV light, this technique is an attractive look with white, clean, and crisp lines.

DESIGN GUIDELINES

6500N1267011

- Please refer to Lion's Silicone Design Guide for additional information on our molded silicone options.
- For design containing varying heights of HD silicone, a ground material must be used to ensure proper adhesion to carrier paper and to the garment.
- Photochromatic ink colors available in limited pallet. Can request color card.
- Please consult merchandiser on this new and exciting product.



UV RESPONSIVE



WASH TESTED

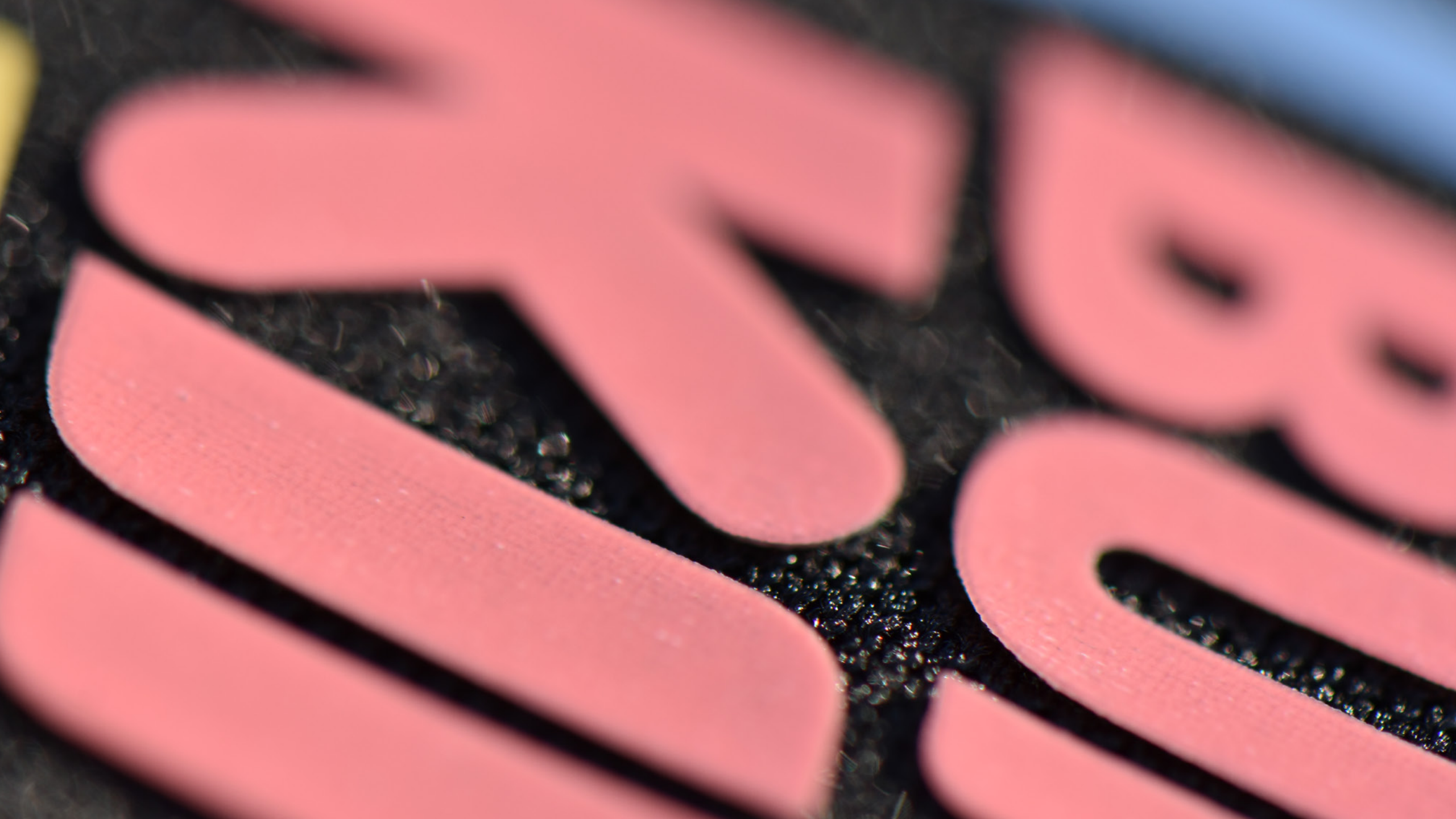




**BURGER
KING**







DGK

MOLDED SILICONE

This design is molded silicone with neon ink. Perfect for intricate patterns and designs, molded silicone is one of the thickest and most precise techniques Lion offers.

DESIGN GUIDELINES

6500N1267014

- Please refer to Lion's Silicone Design Guide for additional information on our molded silicone options.
- For design containing varying heights of molded silicone, a ground material must be used to ensure proper adhesion to carrier paper and to the garment.
- Molded silicone cannot be the ground layer of a multi layered design.
- Can color match.
- Various finishes are available.
- Can differentiate heights up to 4mm.



PMS MATCHABLE
MATERIAL



WASH TESTED











FLINT FIREBIRDS

INFUSED VELVET

This single layer of printed velvet combines soft textures and florescent ink that can change colors when exposed to UV light.

DESIGN GUIDELINES

4201N1267004

- Color matching on Infusion printed velvet can be subjective due to the surface texture and thickness.
- Please note that due to the material pile of velvet, larger, tonal embroidery provides the best outcome, while fine embroidery is not recommended.
- Velvet requires a minimum column width of 2.5mm.
- Color matching on Infusion printed velvet can be subjective due to the surface texture and thickness.



PMS MATCHABLE MATERIAL



INFUSION



UV RESPONSIVE



WASH TESTED



100% FROM RECYCLED POLYESTER



COMPLETELY RECYCLABLE







FIREBIRD





TRULY

SUBLIMATED DAZZLE WITH REFLECTIVE APPLIQUÉ

The ground layer of this emblem consists of printed dazzle using bands of gradating fluorescent ink followed by a white reflective second layer.

DESIGN GUIDELINES

4202N1267047

- Recycled dazzle can be a single layer, though subtle fraying can occur. Capping alleviates this potential.
- Reflective material are available in a limited color pallet. Material color card available upon request.



REFLECTIVE



UV RESPONSIVE



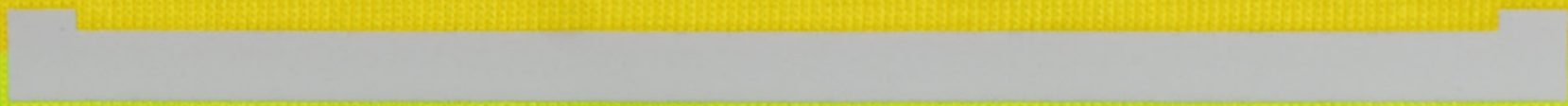
WASH TESTED



FROM RECYCLED MATERIAL

TRULY

HARD SELTZER



TRULY

HARD SELTZER



R U

D S E L T Z

SELTZER

CAMPBELL'S SOUP

INFUSED FELT WITH EMBROIDERY

Neon threads are used in the embroidered letters of the emblem while the rest is a single layer of printed felt using florescent inks.

DESIGN GUIDELINES

2201N1267048

- Color matching on Infusion printed felt can be subjective due to the surface texture and thickness.
- Please see the Lion Stitch Library for a variety of motif stitch options that are available.
- Nine thread color maximum.



INFUSION



UV RESPONSIVE



WASH TESTED

FROM RECYCLED
POLYESTERCOMPLETELY
RECYCLABLE





LICENSED

MILITARY





S

O

U

N

TECHNICAL GLOSSARY

NOTE: Lion Brothers' China factory is officially designated as a high-tech factory and is a zero waste, zero landfill facility with all waste stream materials being recycled.

NOTE: The Recycled Content column specifically refers to the content of the emblem itself, excluding heat seal backings. Sew down emblems directly correlate to the Recycled Content column percentages.

| Title | MOQ | Recycled Content (%) | Sustainable | Low Water | Fully Recyclable | PMS Matching | Reactive | Wash Test | Application Method |
|------------------------|----------|----------------------|-------------|-----------|------------------|--------------|----------|-----------|--------------------|
| CDG 1 | Standard | >20% | ✓ | | | ✓ | | 60°C-10x | Heat Seal/Sew Down |
| CDG 2 | Standard | -- | ✓ | | ✓ | ✓ | | 60°C-10x | Heat Seal/Sew Down |
| Trois-Rivières Lions | Standard | >50% | ✓ | | ✓ | ✓ | | 60°C-10x | Heat Seal/Sew Down |
| California | Standard | >20% | | | | ✓ | | 60°C-10x | Heat Seal/Sew Down |
| Boston University | Standard | >50% | | | | | | 60°C-10x | Heat Seal/Sew Down |
| Washington Nationals 1 | Standard | >20% | | | | | | 40°C-5x | Heat Seal/Sew Down |
| Washington Nationals 2 | Standard | >20% | | | | | | 40°C-5x | Heat Seal/Sew Down |
| Ganni | Standard | 100% | ✓ | | ✓ | | | 60°C-10x | Heat Seal/Sew Down |
| Wisconsin Badgers 1 | Standard | 100% | ✓ | ✓ | ✓ | ✓ | | 60°C-10x | Heat Seal/Sew Down |
| Wisconsin Badgers 2 | Standard | 100% | ✓ | | ✓ | ✓ | | 60°C-10x | Heat Seal/Sew Down |
| Wisconsin Badgers 3 | Standard | 100% | | | ✓ | ✓ | | 60°C-10x | Heat Seal/Sew Down |
| Vans | Standard | >50% | | | | | | 60°C-10x | Heat Seal/Sew Down |
| Machintosh | Standard | 100% | ✓ | | | ✓ | | 60°C-10x | Heat Seal/Sew Down |

| Title | MOQ | Recycled Content (%) | Sustainable | Low Water | Fully Recyclable | PMS Matching | Reactive | Wash Test | Application Method |
|------------------------|----------|----------------------|-------------|-----------|------------------|--------------|----------|-----------|--------------------|
| Impaso Block | Standard | 100% | ✓ | | ✓ | ✓ | | 60°C-10x | Heat Seal/Sew Down |
| Dancing Bears 1 | Standard | 100% | ✓ | ✓ | ✓ | ✓ | | 60°C-10x | Heat Seal/Sew Down |
| Dancing Bears 2 | Standard | 100% | ✓ | ✓ | ✓ | ✓ | | 60°C-10x | Heat Seal/Sew Down |
| London Lakers | Standard | 100% | ✓ | | ✓ | ✓ | | 60°C-10x | Heat Seal/Sew Down |
| MTV | Standard | >50% | ✓ | ✓ | ✓ | ✓ | | 60°C-10x | Heat Seal/Sew Down |
| Baker Champion | Standard | >50% | | | | | ✓ | 60°C-10x | Heat Seal/Sew Down |
| Notre Dame Irish 1 | Standard | 100% | ✓ | | ✓ | ✓ | | 60°C-10x | Heat Seal/Sew Down |
| Notre Dame Irish 2 | Standard | 100% | ✓ | | ✓ | | | 60°C-10x | Heat Seal/Sew Down |
| Triumph | Standard | >50% | ✓ | | ✓ | ✓ | | 60°C-10x | Heat Seal/Sew Down |
| University of Delaware | Standard | 100% | ✓ | | ✓ | ✓ | | 60°C-10x | Heat Seal/Sew Down |
| Gucci | Standard | >50% | ✓ | | | | | 60°C-10x | Heat Seal/Sew Down |
| Clemson Tigers | Standard | >50% | | | | | | 60°C-10x | Heat Seal/Sew Down |
| New Orleans Saints | Standard | >50% | | | | | | 60°C-10x | Heat Seal/Sew Down |
| Levi's | Standard | 100% | ✓ | ✓ | ✓ | ✓ | | 60°C-10x | Heat Seal/Sew Down |
| Calgary Flames | 500 | -- | | | | ✓ | | 40°C-5x | Heat Seal/Sew Down |
| Nintendo | 500 | >50% | | | | ✓ | | 60°C-10x | Heat Seal/Sew Down |
| Champion | Standard | >50% | | | | | | 60°C-10x | Heat Seal/Sew Down |
| Off White | Standard | >50% | | | | | | 60°C-10x | Heat Seal/Sew Down |
| Lego | Standard | >20% | ✓ | | | ✓ | | 60°C-10x | Heat Seal/Sew Down |
| Hello Kitty | 500 | >50% | | | | ✓ | | 60°C-10x | Heat Seal/Sew Down |
| Chinatown Market | 500 | -- | | | | | ✓ | 40°C-10x | Heat Seal/Sew Down |
| Burger King | 500 | -- | | | | | ✓ | 40°C-10x | Heat Seal/Sew Down |
| DGK | 500 | -- | | | | ✓ | | 40°C-10x | Heat Seal/Sew Down |
| Flint Firebirds | Standard | 100% | ✓ | ✓ | ✓ | ✓ | ✓ | 60°C-10x | Heat Seal/Sew Down |
| Truely | Standard | >50% | | | | | ✓ | 60°C-10x | Heat Seal/Sew Down |
| Campbell's | Standard | 100% | ✓ | | ✓ | | ✓ | 60°C-10x | Heat Seal/Sew Down |

CONTACT INFORMATION

UNITED STATES HEADQUARTERS:

Red Brook Corporate Center, Suite 410
300 Red Brook Blvd.
Owings Mills, MD 21117
PH: 800-365-6543

ASIA HEADQUARTERS:

5/F Po Shing Industrial Bldg.
23 Tai Yau St.
San Po Kong, Kowloon, Hong Kong
PH: 011-852-2323-8205



lionbrothers



lionbrothersinc



lionbrothersinc